

## Chapel Dedication Is Planned for November; Bishop Asks laymen to Provide Furnishings

By Msg. A. J. Burke

About a year ago this time when a new recruiting pamphlet was issued showing the architect's drawing of the new chapel on the front page, I overheard a student remark to another, "That makes me laugh. They will never build that chapel!" This student was reflecting an opinion shared by many, for a new chapel at St. Ambrose has been talked about for the past twenty years.

**But today this chapel is rapidly becoming a reality. The contracts were let on April 7, 1952; the first spadeful of dirt was turned on May 1, 1952; the corner stone was laid on Sept. 24, 1952; and practically all that remains to be done on the exterior building is to put on the roof and to complete the tower. It is the wish of the Most Reverend Bishop to have the dedication sometime next November.**

Of course much yet remains to be done on the interior. It is no small job to bring together on scheduled time all the required furnishings that are being built in various cities and by different artists and manufacturers. It is also a considerable problem to raise the money to pay for these furnishings.

All of you have probably heard how the chapel is being financed, but the story bears repeating. The priests of the Diocese of Davenport, who have contributed so much to the maintenance and expansion of St. Ambrose College, have pledged themselves to pay for the Chapel exclusive of furnishings. Since 1939 the priests of this Diocese have been contributing to a chapel fund.

The Most Rev. Bishop, Ralph Leo Hayes, has expressed the hope that if the clergy will pay for the building, the laity will assume the payment for the interior furnishings. In a folder just available for release the Bishop has written:

"The beautiful new Chapel of Christ the King at St. Ambrose College will be solemnly dedicated in the month of November 1953. The Chapel itself is being erected through the generosity and sacrifices of the priests of the Diocese. Inquiries have been received

whether gifts and memorials would be accepted from Catholic Societies and from individuals. We shall indeed be most happy to accept such memorial gifts, and for this purpose we make the following list available.

We feel that in this list of needed articles you will find one or other that will appeal to you as a memorial for your family or a devoted father or mother or a deceased friend. Did you ever desire to be the donor of a chalice to be used every day in the sacrifice of the Mass? Or the altar on which Mass will be said? Or the missal? Or a monstrance for benediction of the Blessed Sacrament? Or a beautiful stained glass window? Or the vestments which the priest will use while celebrating Mass?

Many of these memorials are well nigh imperishable; they are of stone or of metal or of hard wood, all especially designed, all hand wrought with the greatest care by the finest craftsmen.

The following table of required articles will afford everyone the opportunity to make a selection according to his means and pre-

ference." (The list of required articles is reproduced on page 3 of this issue.)

---

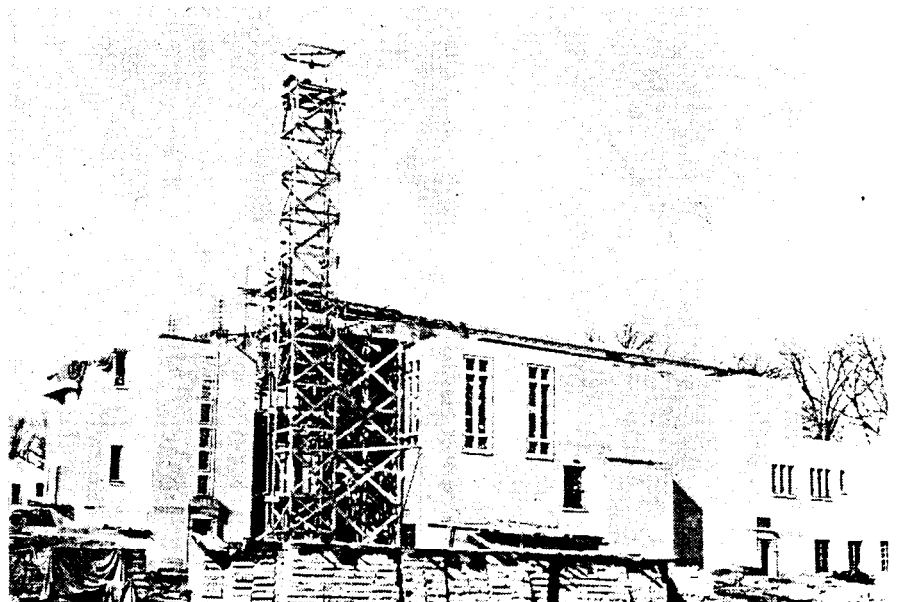
**THE AMBROSIAN ALUMNUS**  
Published monthly by the Alumni  
Office of St. Ambrose College

---

**The Catholic Messenger is recording each week the donations that have been received. As of February 26, 1953 the total gifts received amounts to \$34,776.08. The response has been most gratifying and gives assurance that all the furnishings will eventually be provided.**

College students, at least St. Ambrose students, are not too flush with money, yet the interest of our students, backed by substantial donations, shows an eagerness to share in providing our chapel with appropriate and beautiful furnishings. One student has contributed 3100.00: Campus organizations, clubs, and individuals have rallied to a drive being conducted jointly by the Student Council and the Ambrosian News.

Not only students, but the lay faculty and the lay faculty wives are organizing to make a substantial contribution. (Con't on page 3)



**NEARING THE TOP**-Pictured above is a new view of the east side of the new Chapel of Christ the King, being erected in center campus. The chapel will face north and south, so this side pictured faces Scott street. The main body of the chapel at right is completed, with a flat roof. The tower, over the main entrance at left, is still to be constructed. At extreme right are the upper and lower sacristies for priests.

# Furnishings for Christ The King Chapel

Following is the complete list of required articles and furnishings needed for the new St. Ambrose Chapel of Christ the King, now nearing completion. Many alumni, students, parents, and friends of St. Ambrose are donating these articles as memorials to deceased members of their families. This list is provided for any alumnus who might be interested in a memorial, and a special folder is also available at the college alumni office, if desired. The name of every donor will be inscribed on a bronze tablet placed in the entrance of the Chapel. Prospective donors should write to Rt. Rev. Msgr. A. J. Burke, President, St. Ambrose College, Davenport, Iowa.

1	Ablution cup for main altar	\$ 9.00	1	Holy water receptacle	125.00
16	Ablution cups for other altars, each	3.00	1	Lecturn	500.00
24	Albs, each	22.00	1	Loud speaker system	800.00
1	Altar book and servers' cards	50.00	1	Luna holder for Blessed Sacrament	50.00
1	Altar, main in upper chapel	4,718.00	1	Missal for main altar	100.00
1	Altar, main in lower chapel	1,500.00	16	Missals, each	50.00
1	Altar, Blessed Mother's in Transept Chapel	3,725.00	17	Missals pro defunctis, each	25.00
16	Altar cards sets, each	20.00	1	Missal stand for main altar	150.00
1	Altar card set for main altar	50.00	16	Missal stands, each	25.00
12	Amices, purificators, etc., in sets, each	10.00	1	Monstrance	500.00
4	Antependia, each	100.00	16	Prie dieux and chairs, each set	68.75
1	Bell, for main altar	14.25		Pews, complete	14,150.00
1	Blessed Sacrament canopy	400.00		one pew	183.00
1	Blessed Sacrament veil and stand	60.00		one sitting	32.00
1	Candelabra, pair	300.00	1	Processional crucifix and acolyte candlesticks	200.00
2	Candle extinguishers, each	10.00	1	Screen, back of main altar	8,780.00
4	Candle sticks for main altar, each	100.00	1	Screen, organ	6,430.00
16	Candle sticks in sets of two, each	50.00	1	Sedilia	265.00
10	Chalices, each	200.00	1	Set electronic bells for tower	2,457.00
16	Chapels in lower church, each	750.00	14	Stations of the Cross, each	150.00
	Choir stalls, complete	4,350.00	1	Tabernacle, main altar in upper chapel	650.00
	one pew section	362.00	1	Tabernacle, main altar in lower chapel	300.00
	one sitting	67.00	1	Tabernacle, Blessed Mother Altar	300.00
60	Choir cassocks, each	15.00	1	Tabernacle Lamp, upper sanctuary	200.00
60	Choir Surplices, each	6.00	1	Tabernacle Lamp, lower sanctuary	100.00
1	Censor	50.00	1	Tester over crucifix	2,200.00
2	Ciboria, each	100.00	3	Vases, in pairs, each	150.00
2	Collection Baskets, each	12.50	5	Vestments, sets for solemn mess, each	500.00
2	Communion patens, each	35.00	17	Vestment sets in five colors, each	50.00
4	Confessional, each	600.00	1	Vestment case	4,566.00
2	Credence Tables, each	200.00	1	Vestment case	2,851.25
1	Crucifix over main altar	2,500.00	10	Nave windows, each	1,680.00
16	Crucifixes, each	45.00	1	Choir window	1,280.00
1	Cruets, one set for main altar	25.00	1	Choir window	800.00
16	Cruet sets, each	3.50	2	Chapel windows, each	2,240.00
1	Holy Water pot end sprinkler	50.00	1	Chapel window	2,500.00

What about the alumni? Alumni, as alumni, will not be solicited. We feel that the alumni are doing all that can be expected of them in contributing to the Living Endowment. That fund is so essential to the welfare of the College that we do

not for an instant want to imperil its continuing success by diverting alumni interest into another kind of fund raising.

At the same time I do not feel that the Alumni should be denied the opportunity to know that gifts

and memorials are being accepted. If any alumnus wants to contribute to the chapel furnishings fund as well as continue his annual Living Endowment subscription, that of course is his privilege. His donation will be most welcome.