

# Big changes coming for LeClaire

by David Baker  
Editor in Chief

You probably won't see too many "slam dunks" in LeClaire Gym anymore.

The St. Ambrose Planning Committee has decided the gym will be the new site for college maintenance, housekeeping and campus security. This means the lower level of the Galvin Fine Arts Center, which houses college maintenance now, will be open for office expansion.

Dr. Edward Rogalski, executive vice president, says the mass communications, music and fine arts departments will all eventually share the space. College maintenance will begin moving most of its operation to the LeClaire Gym this spring and summer.

Rogalski says maintenance will be moving what they can this spring, but will most likely make its move this summer. "We can't afford to close down the operation," he says.

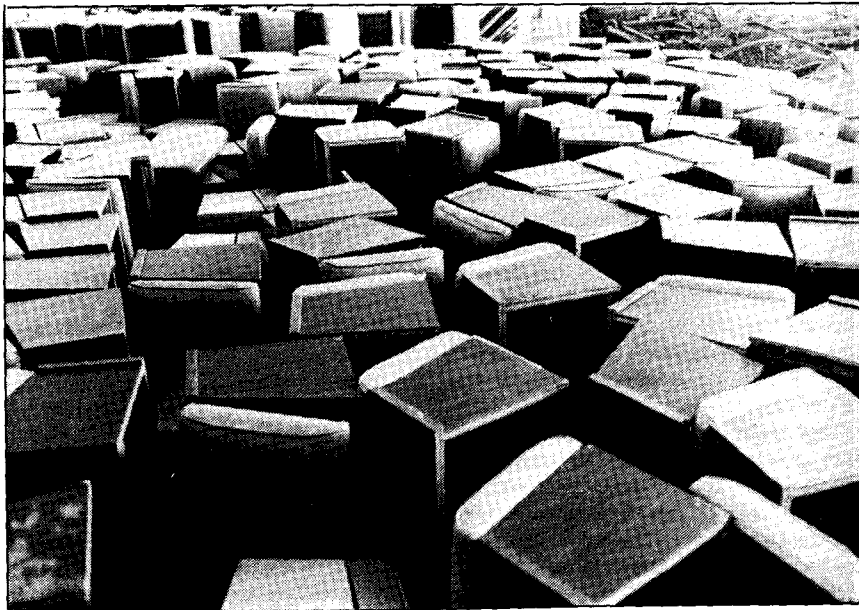
He says maintenance will still use its garage area in the Galvin Fine Arts Center.

Most of the LeClaire Gym will remain an open space, but a few small offices will be built. The college also plans to waterproof the gym's exterior and possibly replace windows. The gym received new roofing in the summer of 1985.

The college plans to begin converting the current Galvin maintenance area to offices during the 1987-88 academic year.

When college housekeeping moves out of its spot in Ambrose Hall and into the LeClaire Gym, the economics, business administration and accounting departments will move into that area.

The business and registrar's offices are expanding into the area adjacent to the Ambrose Hall laundry room and old security station. Rogalski says,



Paul Steenson

**A 'sea' of old furniture is now being stored in the old Murphy Gym on third floor Ambrose Hall.**

"Hopefully, by next fall this area will also house a new computer lab."

Laundry facilities are also on the move. Rogalski says, "The college laundry is being decentralized. Laundry areas will be in South and East Halls." He says the other dorms will also be accommodated with a laundry area.

Rogalski says there's not much room left for expansion on campus using existing buildings. "The Murphy Gym is being used as a storage area, and it represents the only space currently open for possible expansion."

When the new gym was opened in 1983, most physical education activities moved from the LeClaire and

Murphy Gyms to the Lee Lohman Arena. "That's its intended purpose," says Rogalski. The LeClaire Pool remains in use.

St. Ambrose is storing old dormitory furnishings and other college property in Murphy Gym, located on third floor Ambrose Hall.

Rogalski says, "There's been discussion from time-to-time about Murphy Gym. It's been suggested it be turned into a student study area. There has even been one suggestion to convert it back to its original form - an auditorium."

He adds, "As the need emerges, we will use Murphy Gym."