



1882 1982

CENTENNIAL COUNTDOWN

Over \$3.5 Million Mark

Gifts pledged to the CENTENNIAL COUNTDOWN program now total \$3,533,700.

The CENTENNIAL COUNTDOWN is a \$6.8 million capital, academic operations, and endowment effort which coincides with the 1982 centennial year of the College.

Program goals include \$4.8 million for capital and operating expenses, of which \$2,863,800 has been pledged, and \$2 million for endowment, of which \$669,900 has been pledged.

Alumni Phase

The College currently is in the Alumni Phase of the CENTENNIAL COUNTDOWN, with get-togethers for alumni in areas of the country where there are concentrations of 50 or more alumni.

CENTENNIAL COUNTDOWN cabinet members and committee members are named in each area to be responsible for presenting a series of informational meetings for alumni wishing to know more about the program.

Plans now are under way to present the program in Chicago, Ill., and surrounding suburbs. There also will be get-togethers in Phoenix and Tucson, Ariz., Los Angeles, Calif., and in Cedar Rapids, Des Moines, Iowa City and Muscatine, Iowa.

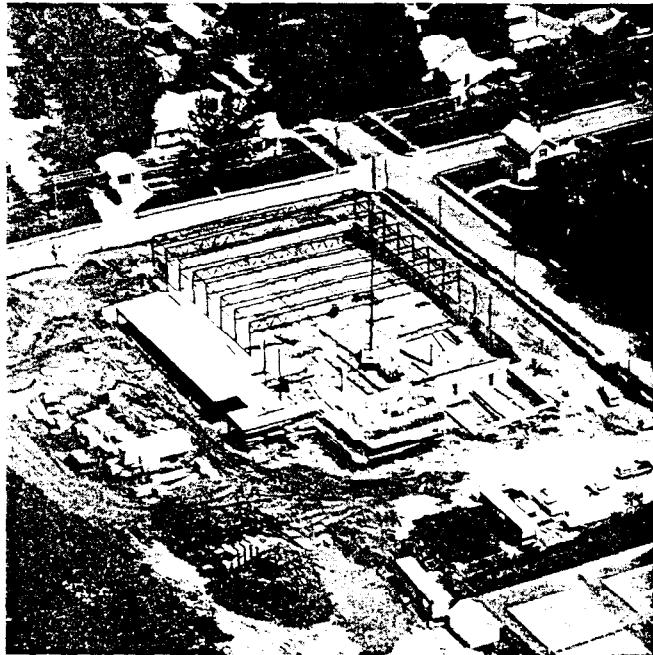
Activities are being concluded in New York, N.Y., and in Bloomington, Peoria, and Sterling-Rock Falls, Ill.

\$200,000 Challenge Grant for P.E. Center

St. Ambrose College has received a challenge grant of \$200,000 from The Kresge Foundation of Troy, Mich., to be used toward the new \$3 million physical education center. The new facility is a principal component of the \$6.8 million CENTENNIAL COUNTDOWN, a capital, academic operations, and endowment program now under way at the College.

Actual construction cost of the new building is \$2,993,000. An additional \$500,000 is being sought in endowment for operational expenses. Before the Kresge commitment, a total of \$2,615,400 had been pledged toward the building project. The Kresge Foundation challenge grant is contingent upon the balance of the needed \$3.5 million being raised before July 15, 1983.

St. Ambrose received a \$50,000 challenge grant from Kresge in 1977 for Phase I restoration of historic Ambrose Hall.



New Physical Education Center Takes Shape

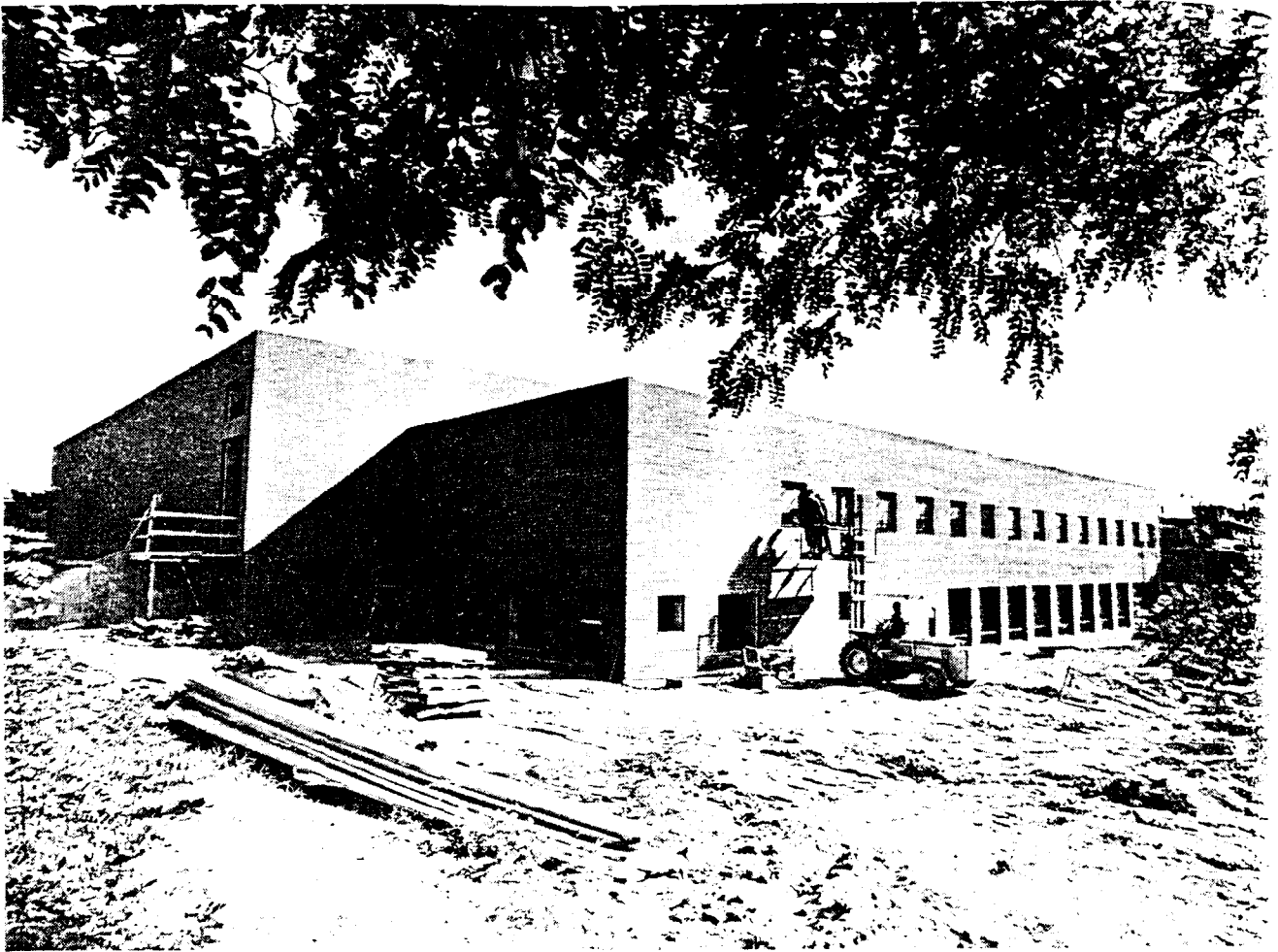
The new \$3 million physical education center currently under construction on the northeast corner of the campus is expected to be under roof before winter and completed by June, 1983.

Foundation walls are in place, steel trusses are installed over the gymnasium area, and masonry work is in progress.

The structure will be 47,300 square feet in size, and will provide facilities for basketball, tennis, volleyball, jogging, wrestling, gymnastics, handball/racquetball courts, physical conditioning and other activities for lifelong recreational interests. There will be locker rooms, and offices for faculty and staff.

The building also will serve academic purposes, with expandable classrooms, areas for teaching recreational sports activities for academic credit, a physical education library, and a special physical education room for working with the handicapped.

Retractable bleachers will seat 2,000 persons.



Day-to-Day Progress — Roofing work is well under way on the new physical education center now under construction on the northeast section of the campus. with exterior masonry work, grading, and sodding nearly completed.

The building is expected to be enclosed by early December, with glass in the windows, electrical service connected, entrances

secured, and temporary heat for inside winter work on mass floor topping on pre-cast concrete, electrical installation, plumbing, and painting.

Target date for substantial completion of the new physical education center is May 1, 1983.

Century Club Gifts Purchase Computer Hardware

Contributions to the Alumni Association's "Century Club" have enabled the College Relations Office to purchase and install three pieces of computer hardware for use in updating and improving various record keeping systems. The College Relations Office incorporates alumni relations, information, planned giving, and development functions.

The Century Club is composed of individuals who specifically support the Alumni Association through annual gifts of \$100 or more. George Fuller, '52, of Bettendorf,

is founder and chairman of the Century Club.

The equipment purchased, costing approximately \$4,000, includes a computer terminal, small printer, and a 1200 baud modem — hardware which communicates information at a high speed via a telephone line connected to the College central computer system on campus.

Addition of the hardware is expected to eliminate manual record keeping operations and contribute to increased office efficiencies.