

The Art Department occupies two levels of the east wing of the new building. A carpeted corridor on the upper level gives a large expanse of well-lighted wall space that will often be used for public art exhibitions. The upper level includes an art history classroom with slide and film projection facilities, and an adjoining slide storage room. A seminar classroom and drawing studio with skylights, glass wall and banks of fluorescent lighting are also entered from the upper level corridor. A modern typographic laboratory equipped with offset presses and a darkroom with photo-composition and platemaking facilities is designed to acquaint students with high quality, contemporary printing methods.

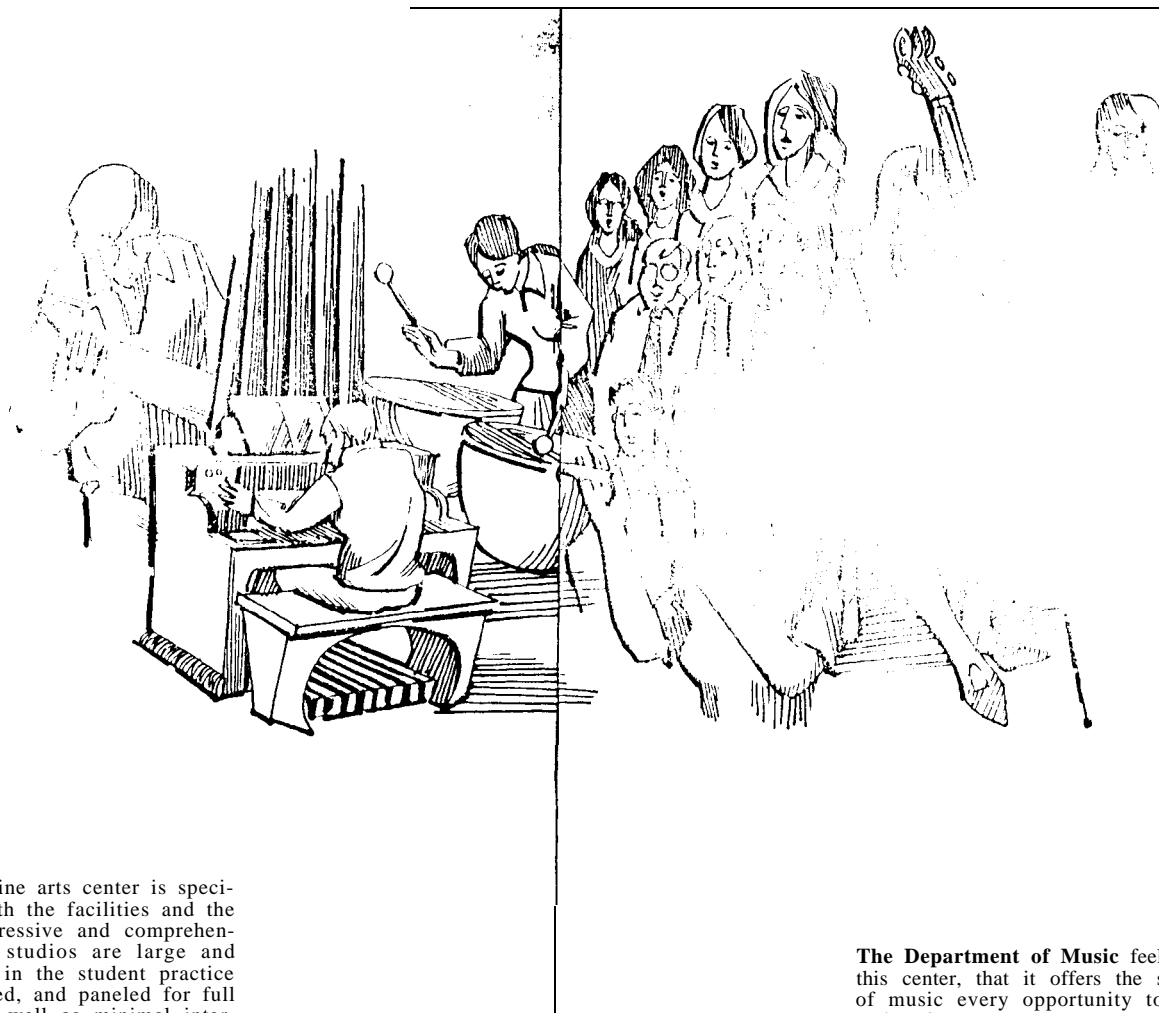
A large painting studio covers 1,700 square feet of space on the upper level. Glass wall exposure on the north and east sides, in addition to bubble skylights and fluorescent lights, gives a luminous environment for painting classes. Additional rooms on the upper level provide office space for members of the art teaching staff.

The ground level of the art wing features a print-making studio with intaglio and lithographic presses. An "acid room" with acid-proof sink and air vent is entered directly from the print studio. Both the print studio and the large multipurpose studio next to it

may be entered either from the lower level corridor or from the outside through doors in the east wall. The multipurpose studio-workshop provides ample space for pottery, sculpture, silkscreen, picture-framing and other art activities. Completing the art facilities on the ground level are a large student darkroom for photography classes and additional office space for the art teaching staff. An alcove in the lower corridor contains a factory-type lavatory for the convenience of studio classes.

The art program is given excellent support and considerable amplification by this new facility. The department, headed by Rev. E. M. Catich, a famous calligrapher who is also an expert in lettering history and design, has always placed great stress on the developing of skill in drawing and the building of a strong visual imagination. With the addition of this classroom and studio space, as well as the equipment with which it is furnished, students already exposed to a liberal array of art ideas will be able to use their growing skill to give a liberating expression of their ideas in the full variety of traditional and contemporary techniques and media.

The Engineering Department occupies a spacious drafting room at the north end of the ground level. Light entering through glass walls on the north and east sides is augmented by banks of fluorescent lights above the drafting tables. The chairman's office is a glass-enclosed cubicle in the main space.



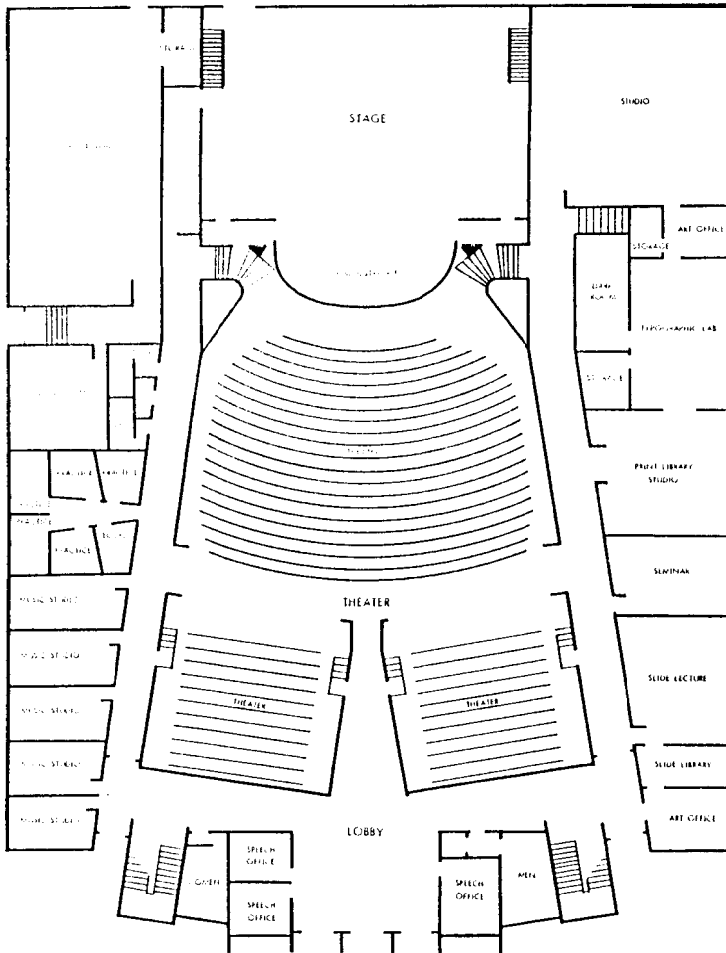
The music wing of the new fine arts center is specifically designed to provide both the facilities and the atmosphere conducive to progressive and comprehensive musicianship. Teaching studios are large and pleasant and, as is also seen in the student practice rooms, are constructed, carpeted, and paneled for full acoustical response within, as well as minimal interference from outside. A centrally-located record library offers the student not only standard repertoire, but also holds many unusual and now rare recordings.

A small concert hall lies in the northwest corner. This room seats approximately 150, has a teakwood stage-area floor, a warm decor, is acoustically designed, and serves multiple purposes: band and choral rehearsals, repertoire classes, student recitals, the more intimate faculty and guest concerts, and additional classroom space. Formal performances of guest and faculty artists, chorus, band, and concerts of all kinds are presented in the large auditorium. Maximum seating capacity of this beautifully furnished hall is 1200. Its acoustical vibrance and lush design offer a magnificent setting for experiencing every type of musical art. Other features of the arts center are the new instruments available for student and faculty use, including a new Allen organ, two 7-foot Steinway pianos, and a 9-foot Baldwin SD10 piano.

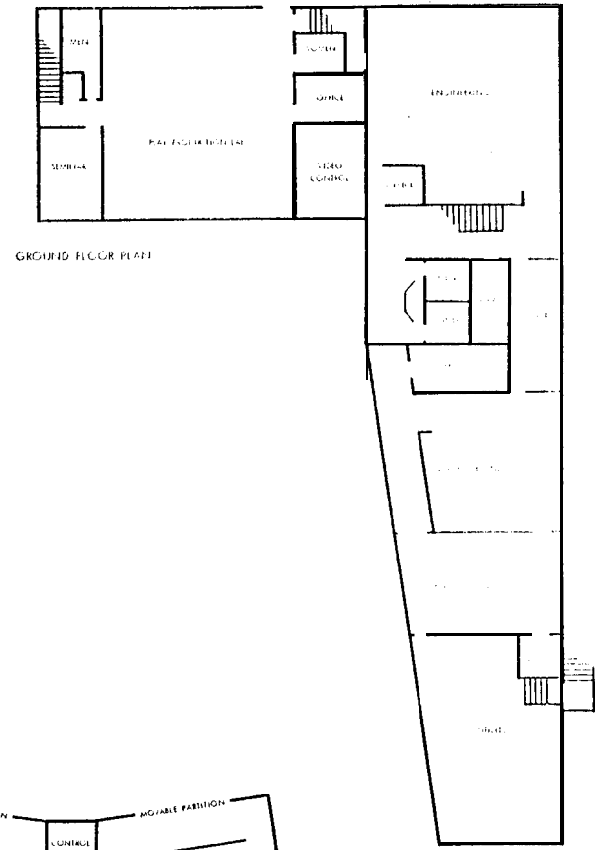
The Department of Music feels, with the completion of this center, that it offers the serious student and lover of music every opportunity to pursue his scholarship and artistry.

One of the "most moved" departments of our college is Music. Father Cletus Madsen, long the head of the department, saw it go from recitals in classrooms to large lecture halls, the towers of Ambrose Hall and the Army barracks that has housed Music for the last twenty-three years. In recent years most concerts have been held in Christ the King chapel and organ concerts will continue to be held there where there is an excellent three-manual pipe organ. The new facility will afford beautiful space for both large and small music performances.

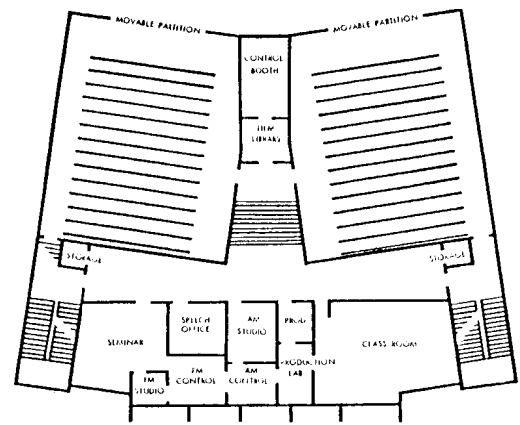
A special feature of the rehearsal-recital hall is the stereo playing and recording equipment. This will make it possible to record all rehearsals, lessons and recitals that are held in this hall. The recordings will be used for self-criticism and some will be played on our campus radio stations. The record playing equipment will be used by all classes that are held in the hall.



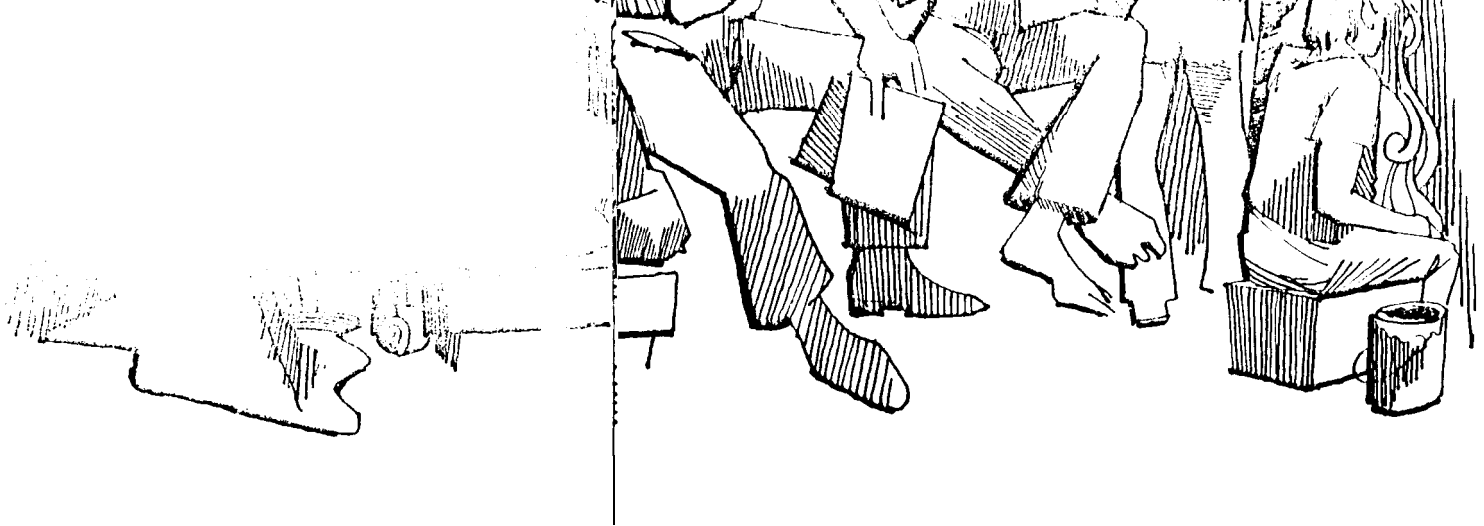
MAIN FLOOR PLAN



GROUND FLOOR PLAN



SECOND FLOOR AND BALCONY



The central portion of the new building houses the multi-faceted Department of Speech, Drama and Mass Communication. The three branches of the department function independently while retaining enough inter-relationship to be mutually helpful. Some classes in the area of secondary education will make use of the smaller classrooms in the east wing where a more personal approach to instruction can be maintained. Since they will also be using the radio, television, and theatre facilities, these future teachers will have the opportunity to become familiar with nearly every teaching tool and technique available for effective teaching.

The latest innovation of this department is the Mass Communication Program. This is an interdisciplinary course of study for those who are interested in the various forms of mass media. Students in this **area** will blend their study of sociology, philosophy, journalism and other subjects with the use of an impressive array of fine equipment. Radio station KALA-FM contains equipment valued at \$50,000. Presently a 10-watt station, KALA-FM plans to increase its capacity to 1,000 watts. In addition, there is a complete black-and-white television production studio which has the potential for full-color production. The equipment is so flexible that "location taping" is possible, and development of a closed circuit capability for the entire campus is envisioned. The new Center also contains darkroom and film editing facilities which means that the development of the department's motion picture offerings is in the very near future.

The Department of Speech, Drama and Mass Communication has as its main objective the integration of scholarly knowledge and technical skill that will satisfy the aesthetic and professional needs of its majors, of the campus, and of the community. It is never an easy task to develop the student who is humanistically oriented, yet sufficiently practical to confront the realities of "producing." This problem becomes clearly visible in relation to the theatre. The main stage of the new theatre-auditorium can be transformed from the focus of an intimate 500-seat house to that of a large and acoustically perfect 1200-seat house, offering the student a broad range of performance situations. Moreover, the student-artist will find opportunity abounding in the laboratory theatre with its supporting make-up and costume facilities.

For students who are interested only in the technical aspects of drama, challenges await them in the five scene pre-set lighting control console. This console has 21 dimmers, each with a 7.2 KW capacity, 4 group masters, a fader, and grand master. There are 115 new Century lighting instruments which range in size and design from 1,000-watt quartz ellipsoids to the 1,100-watt scoops. Other outstanding features are the hydraulic forestage (it elevates the floor of the orchestra pit to stage floor level), and full fly gallery.

A fully equipped scene shop serves all productions. The flexibility of the theatre operation makes it possible to have three productions in performance and rehearsal simultaneously.



The Arts at Saint Amhrose

Theatre, art, music and speech have long been a vital part of the academic program at St. Ambrose because they give proper emphasis to the aesthetic aspect of education. Training in these arts has left its mark on **our** graduates which differentiates Ambrosians from more vocationally trained liberal arts graduates. Because of their Ambrose education, many men and women now enjoy positions of leadership in professional and amateur theatre, pursue careers on stage, perform on concert platforms, and teach these arts in classrooms.

The moderate size of our departments means that students are provided a chance to perform and be judged by highly qualified artist-teachers. Our facilities have now **been** brought **up** to the teaching potential of our faculty so that classes in the arts are held in a thoroughly professional setting.

Among the opportunities presented by the new facility is "Radio Row." This professionally designed complex houses KALA-FM. This station is now equipped with its own offices, record library, control booths, announcing booths and production laboratory, all containing the finest equipment. Students occupy all major positions in the management and operation of the station. This area is so well designed and equipped that every conceivable type of programming is possible.

