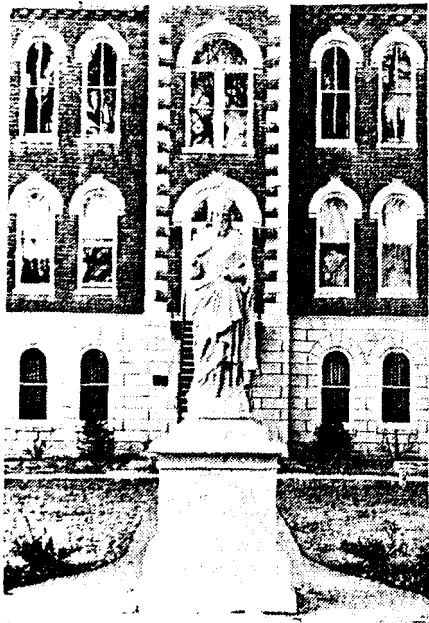


Will the real Saint Ambrose stand?

by Jeff Lake

Will the real Saint Ambrose please stand, or will the real Saint Patrick please make himself known? If you have asked yourself before just who that masked man is in front of Ambrose Hall, the Rev. Drake Shafer,



The "generic" statue in front of

Vice President of Student Services and College Chaplin, has the answer.

According to Shafer, "The statue might be termed a 'generic statue' because it has no distinguishing symbols to indicate which bishop it is. Bishops often times have a symbol. This statue has no symbol."

"If it were a statue of Saint Ambrose," says Shafer, "it would have a bee or beehive on it. If it were Saint Patrick, it might have a clover, snake, or another common Saint Patrick symbol. The statue of Saint Ambrose in Christ the King Chapel is an authentic statue of Saint Ambrose."

The statue was donated to St. Ambrose College in the fall of 1885. According to "The Centennial History of St. Ambrose College," by the Rev. Anthony Farrell, the statue was donated to the college by the Rev. Hayes of Imogene, Iowa.

Farrell noted that a hand has been missing from the statue since 1936. Farrell said, "There are two stories, the truth and the 'official' version. There was a long Easter vacation that year, but the student members

at a consertation of the Rev. William Adrian. Returning from partying one night, one of them said, "I have to say goodnight to Saint Ambrose.." Whereupon, he climbed up the **statue**, shook its hand and the hand came off. The student, paralyzed with fear, swore his comrades to perpetual secrecy. Thus, the real events. According to the 'official' version, there had been a spring storm that night, with a high wind that had blown down many branches of the oaks. Monsignor Martin Cone, College President, noted the fallen branches, the broken hand on the statue, and remembered the high wnd. A freak of nature was his verdict."

The statue has been painted green around Saint Patrick's Day since the loss of the hand. According to Shafer, "The section of Ambrose Hall above the statue was called, 'Irish Village,' because of a number of students of Irish descent living in the hall. Before the drinking age was lowered, mostly seniors lived in Ambrose Hall."

On the topic of statues, the "generic statue" facing Locust Street is not the only statue that has

During the early years of the college, **the statue** of the Virgin Mary in the Grotto alongside the LeClaire Fieldhouse had frequently changed places with Palmer College's statue of Buddha — believe it or not.



The authentic Saint Ambrose statue in Christ the King Chapel